



NOEL
RESIDENCE

YOUR FUTURE ELEVATED:

THE NOEL
PENTHOUSE
Residence



Your Dream

Penthouse Awaits

Noel Residence, a contemporary project situated in a tranquil area near Nicosia's city center, offers seamless access to various city districts and the motorway at 19 Methoni Street.

This boutique concept building, with class A energy efficiency, houses eight apartments across four floors, including a stunning three-bedroom penthouse.

The penthouse at Noel Residence is the best option for those seeking the modern urban living. Designed with unique architectural flair and offering breathtaking views, the Noel Penthouse caters to the needs of a contemporary lifestyle. Its prime location makes it an ideal choice for residential homeownership, blending the convenience of city life with the privacy of a quiet neighborhood.

Experience unparalleled luxury and comfort in Noel Residence, where your dream penthouse awaits.

MODERN
sophistication
in the heart of the city



Your Ultimate

Urban Retreat

Step into the ultimate urban retreat at Noel Residence's penthouse. The penthouse offers an expansive and elegant living space, a true testament to modern sophistication. With three spacious bedrooms and 160 square meters of indoor space, it ensures ample room for comfort. The extra bedroom/studio located on the terrace provides additional space for a guest room or office space.

Outdoor living is made perfect with a 40 square meter covered veranda and an additional 56 square meter uncovered veranda. Located on the 4th floor, this penthouse ensures privacy and stunning views.

The penthouse includes two dedicated parking spaces and an 11-square-meter storage unit for added convenience. It also boasts an en suite studio and an extra veranda on the roof, providing additional living space and breathtaking views.

This exceptional home defines the height of contemporary living at Noel Residence and will become your urban oasis.





Exquisite Interior Design

And Modern Family Comfort

The Noel Residence penthouse exemplifies modern design with clean lines and unpretentious elegance. At 160 square meters of interior spaces, the Noel Penthouse ensures that you and your family enjoy spacious comfort.

High-quality materials are used throughout, ensuring both durability and a premium finish. The interior design caters to the needs of the modern family, blending practicality, comfort, and style.

The en suite master bedroom features a walk-in closet, providing ample storage and a touch of luxury. An open-plan kitchen and living room area create a spacious, inviting atmosphere, perfect for contemporary living and family gatherings.

The two additional bedrooms share a spacious bathroom, designed with modern aesthetics and high-end materials. A guest toilet adds to the convenience for residents and visitors alike. Expansive verandas extend the living space, offering a seamless blend of indoor and outdoor living.

On the roof, a stylish studio provides flexibility as an extra guest bedroom or a private office. This space, complete with breathtaking views, enhances the penthouse's quiet-luxury sophistication, making it a true urban sanctuary.

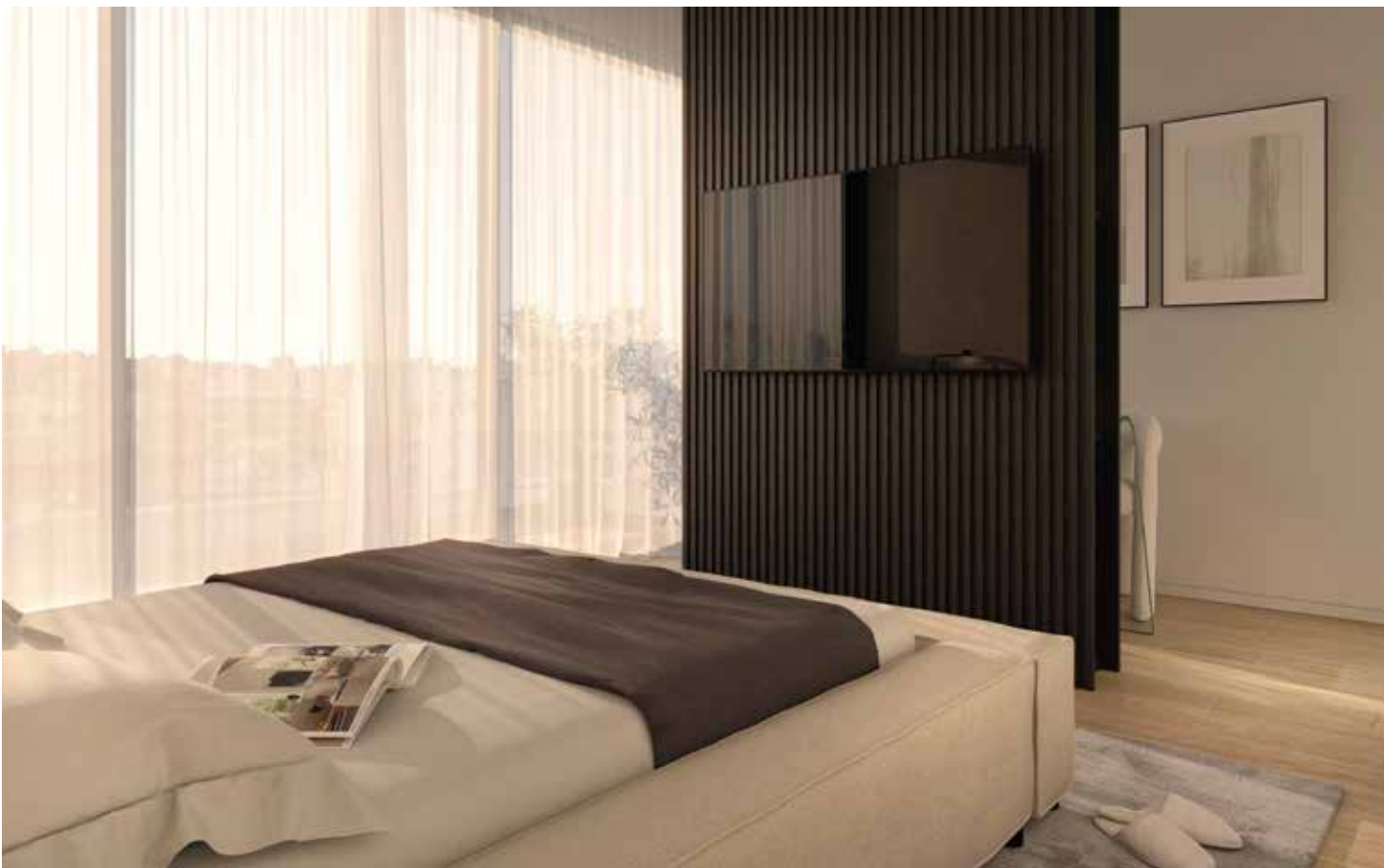


CLEAN LINES
unpretentious
elegance





INTERIOR DESIGN
that leaves
a lasting impression





A photograph of a modern penthouse terrace at dusk. The space is furnished with a dark blue modular sofa, a round ottoman, and a dining table with chairs. A large potted plant is on the left, and a glowing lantern sits on the sofa in the foreground. The terrace overlooks a cityscape under a twilight sky.

A COSY PENTHOUSE
with a flair of
contemporary allure



NOEL
RESIDENCE



Cutting-Edge

Technical Specifications

The NOEL penthouse is distinguished by its meticulous attention to technological sophistication and comfort, setting new standards in residential living. The apartment features a comprehensive range of amenities and systems designed to enhance convenience and luxury.

Architectural interior lighting fixtures are fully integrated throughout the penthouse, ensuring optimal illumination and ambiance in every space. Sound systems with installed speakers in the kitchen, living room, and outdoor areas deliver immersive audio experiences.

Full automation capabilities cover lighting, sound control, air conditioning (A/C), heating and interior shading.





** Interior design is indicative.*

Dimmers with four channels provide precise control over lighting intensity, adapting to various moods and activities. The installation layout and quantity of points are meticulously planned according to the electrical study, ensuring seamless functionality and efficiency.

Additionally, it also includes an under-floor heating system, ensuring warmth and comfort throughout the living spaces. A 3.5kW photovoltaic system supports sustainable energy practices, contributing to reduced energy costs and environmental impact.

For climate control, the penthouse offers a full A/C installation with concealed units in the living room and wall units in the bedrooms, optimizing space and efficiency. These systems are designed for silent operation and effective temperature management, enhancing resident comfort year-round.

With these advanced features and full automation systems, the NOEL penthouse sets the standard for modern living, seamlessly blending cutting-edge technology with unparalleled comfort and sustainable practices.

SPACIOUS VERANDAS to enjoy the comfort of sitting outdoors without the hassle of a yard





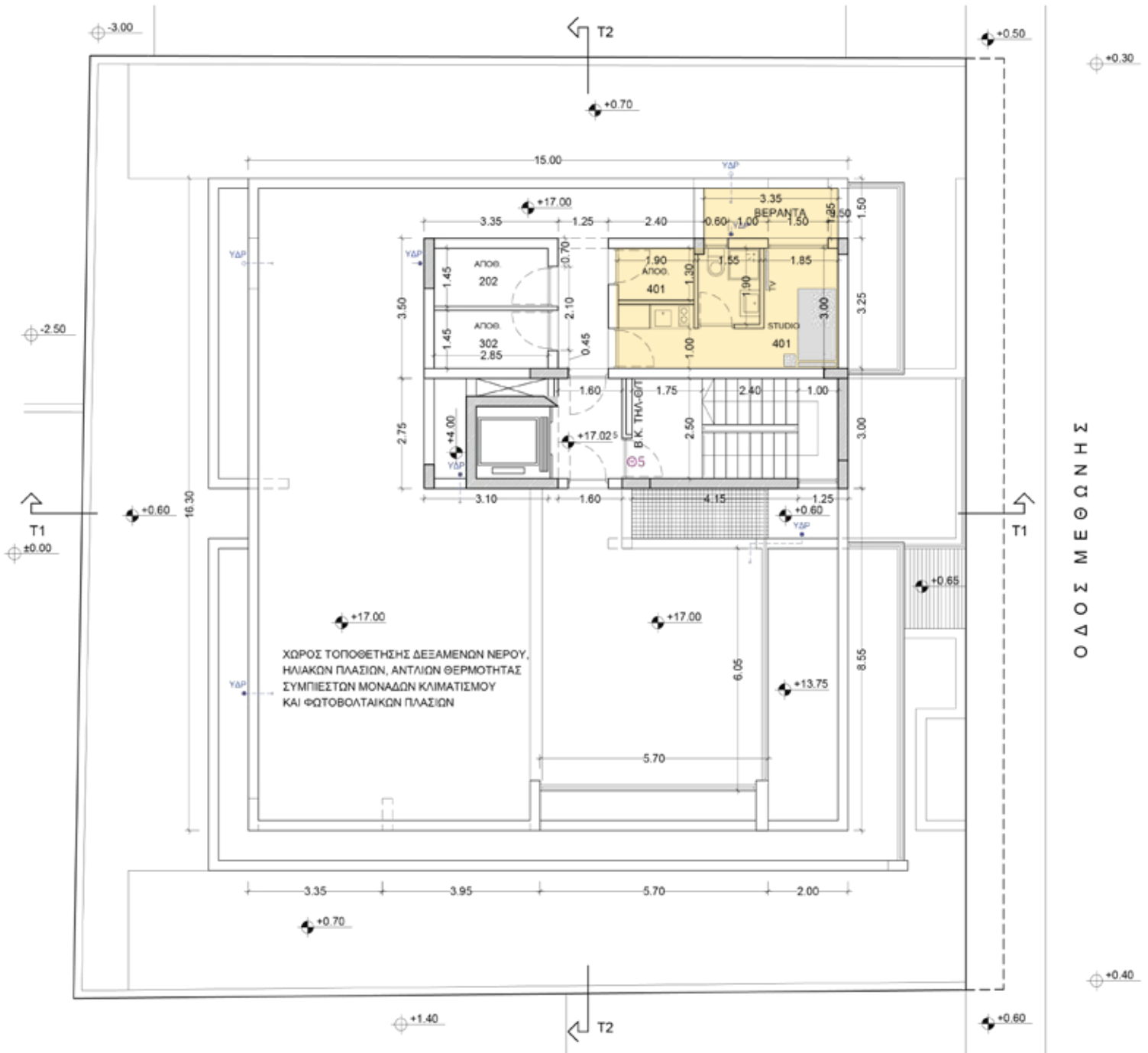
Floor Plans

4th Floor



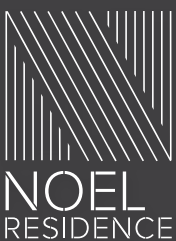
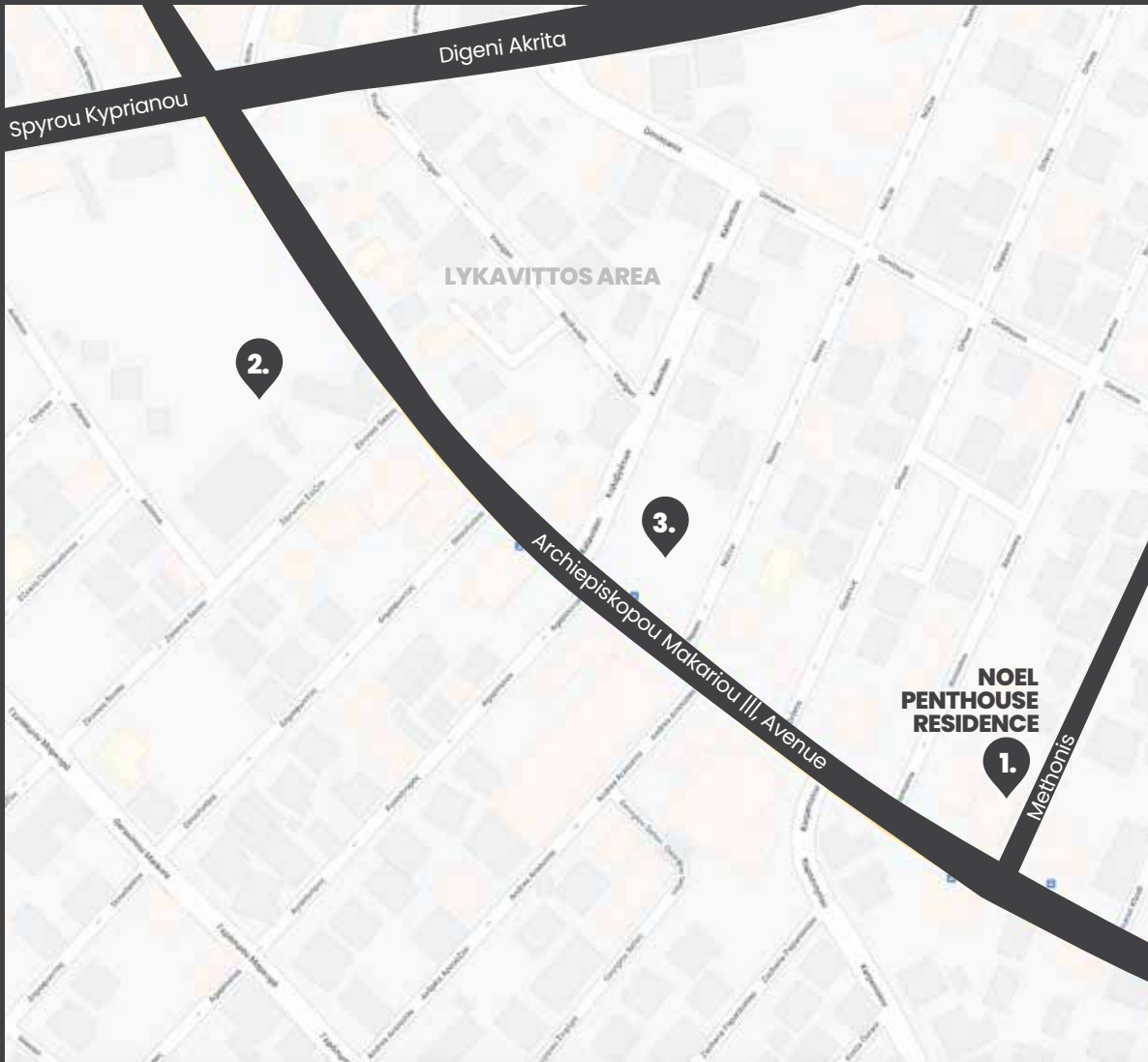
Floor Plans

Roof



The map

19 Methoni Street, Nicosia



1. NOEL Panthouse Residence
2. Park
3. City Centre



SPACES
designed to meet
your everyday need



GOLD HERITAGE
PROPERTIES

CONTACT US

T. +357 22 450 333 | +357 99 216171

E. info@goldheritage.com.cy

Alexio Building, 62 Ifigenias Street,
5th Floor, 2003 Acropolis,
Nicosia, Cyprus

www.goldheritage.com.cy

TOGETHER we create

Lifestyle



CONTEMPORARY SPACES a comforting feeling of belongingness





NOEL
RESIDENCE



YOUR FUTURE ELEVATED:
**THE NOEL
PENTHOUSE**
Residence